

Smart Concrete and Juta GP Titanbond Contiguous Pile Capping Beam



D

D

C

C

B

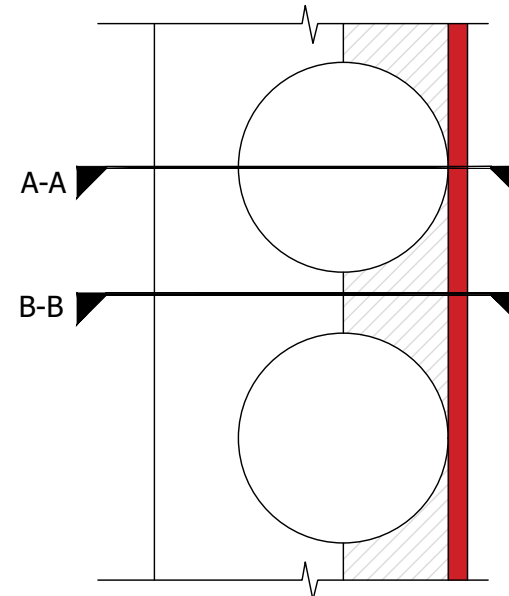
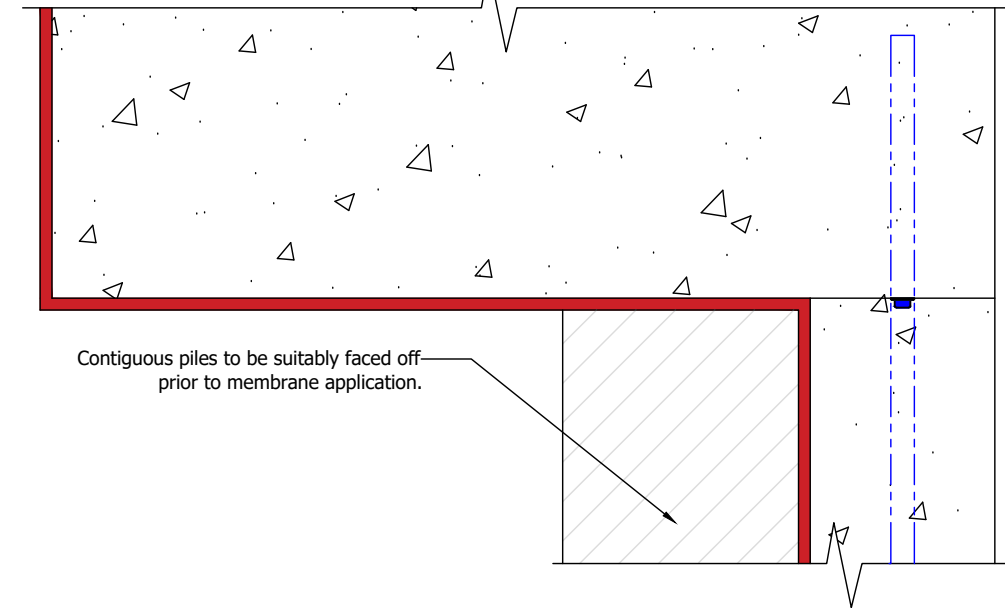
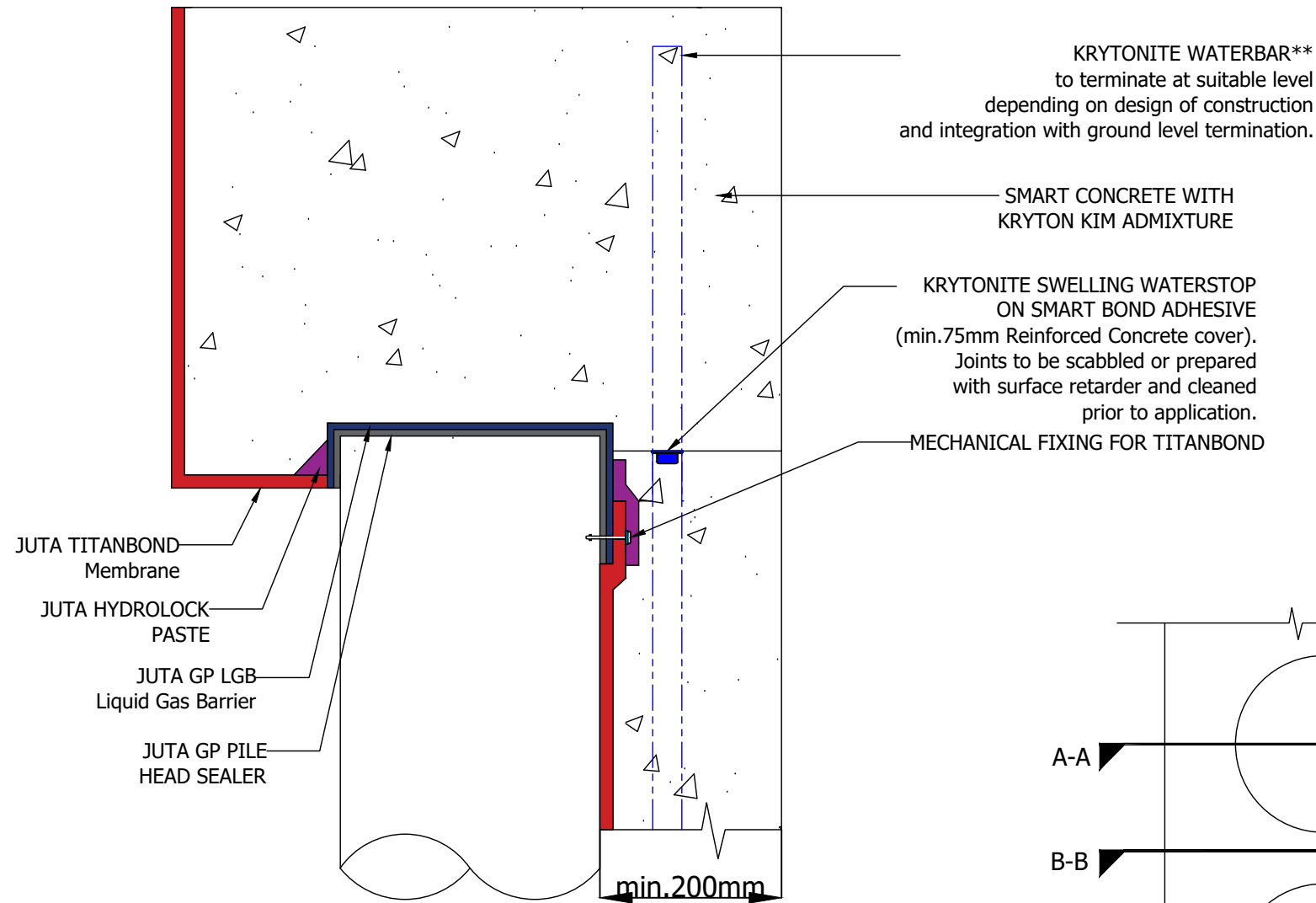
B

A

A

A-A

B-B



** Hydrophilic waterbar networks must be linked across all horizontal and vertical joints

THIS DRAWING IS THE CONFIDENTIAL PROPERTY OF SMART CONCRETE AND MUST NOT BE REPRODUCED EITHER WHOLLY OR PARTLY. ALL RIGHTS IN RESPECT OF PATENTS, DESIGN AND COPYRIGHTS ARE RESERVED. SMART CONCRETE. WWW.SMARTCONCRETE.CO.UK
DO NOT SCALE FROM DRAWING

Revision	Description	By:	Aprvd By:	Date
Drawn by	Checked by	Approved by	Date	
R. Lomas	J. Conmy	V. Mallows		
Description Smart Concrete and Juta GP Titanbond Contiguous Pile Capping Beam				
Drawing No. SCTB03		Issue A	Sheet 1 / 1	

The information contained herein and any other advice are given in good faith based on Smart Concrete's current knowledge and experience of the products when properly stored, handled and applied under normal conditions in accordance with Smart Concrete's recommendations. The information only applies to the application(s) and product(s) expressly referred to herein and is based on laboratory tests which do not replace practical tests. In case of changes in the parameters of the application, such as changes in substrates etc. or in case of a different application, consult Smart Concrete's Technical Service prior to using Smart Concrete's products. The information contained herein does not relieve the user of the products from testing them for the intended application and purpose or good workmanship practice. All orders are accepted subject to our current terms of sale and delivery. Users must always refer to the most recent issue of the local Product Data Sheet for the product concerned, copies of which will be supplied on request or included within the project specification pack.

DRAWINGS MUST ALWAYS BE REVIEWED BY A DESIGN SPECIALIST AND IF NECESSARY MODIFIED TO ENSURE SUITABILITY FOR THE SPECIFIC APPLICATION.



1

2

3

4

5

6